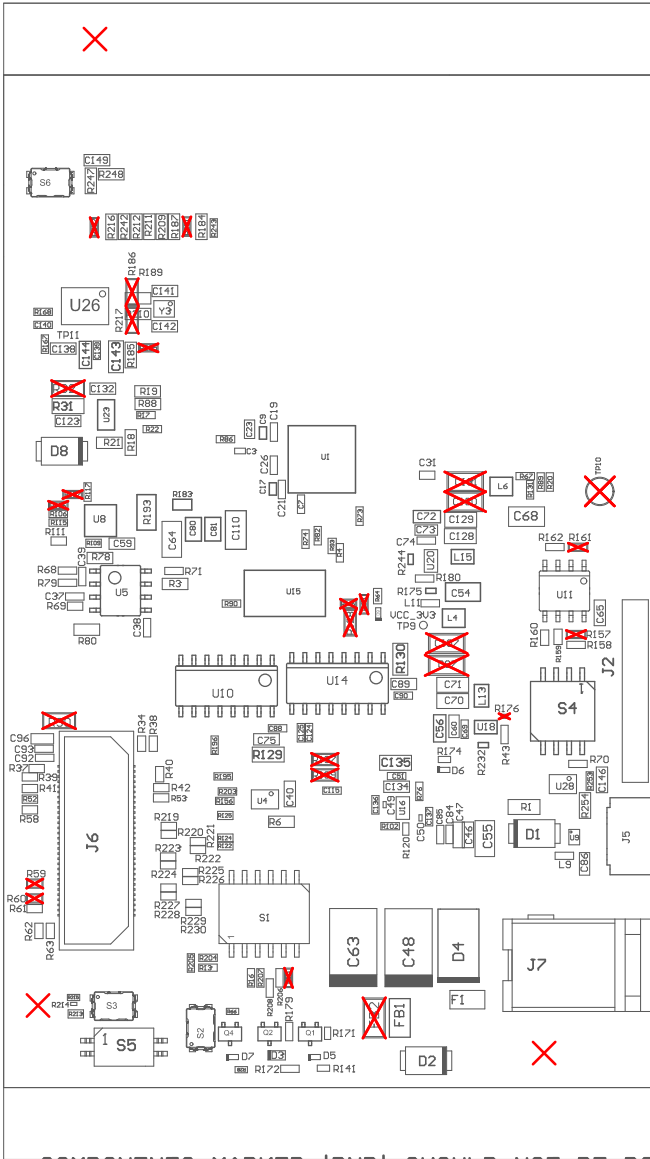
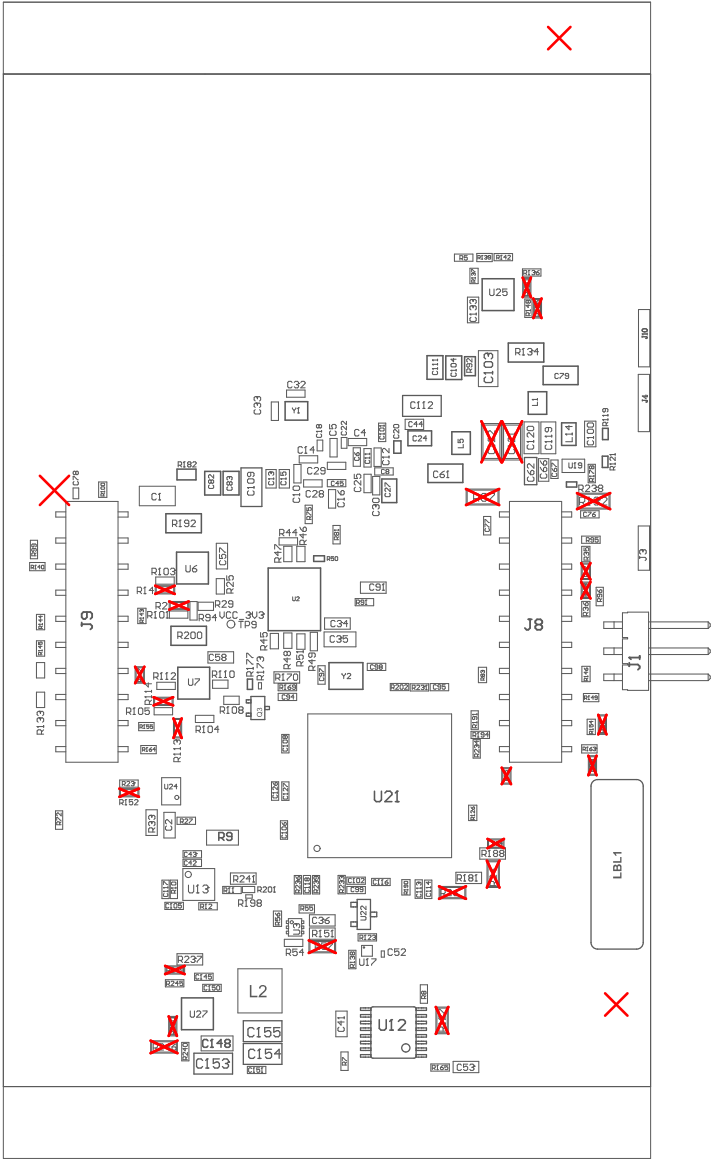


ZZ1 ■Install label in silkscreened box after final wash. Text shall be 8 pt font.
 ZZ2 ■These assemblies are ESD sensitive, ESD precautions shall be observed.
 ZZ3 ■These assemblies must be clean and free from flux and all contaminants. Use of no clean flux is not acceptable.
 ZZ4 ■These assemblies must comply with workmanship standards IPC-A-610 Class 2, unless otherwise specified.
 ZZ5 ■INDICATION FOR COMPONENTS DNP ARE GIVEN AT THEIR CATHODE SIDE.



COMPONENTS MARKED 'DNP' SHOULD NOT BE POPULATED.
 ASSEMBLY VARIANT: 002_IWR

PCB VIEWED FROM TOP SIDE	BOARD #: PROC176A	REV: A	SUN REV: 2993 [Scheduled for deletion]
Assembly Layer Top	TID #: N/A		
PLOT NAME = Top Assembly Drawing	GENERATED : 14-03-2024 18:19:05	TEXAS INSTRUMENTS	



COMPONENTS MARKED 'DNP' SHOULD NOT BE POPULATED.
ASSEMBLY VARIANT: 002_IWR

PCB VIEWED FROM BOTTOM SIDE	BOARD #: PROC176A	REV: A	SUN REV: 2993 [Scheduled for deletion]
Assembly Bottom Layer	TID #: N/A		
PLOT NAME = Bottom Assembly Drawing	GENERATED : 14-03-2024 18:19:06	TEXAS INSTRUMENTS	